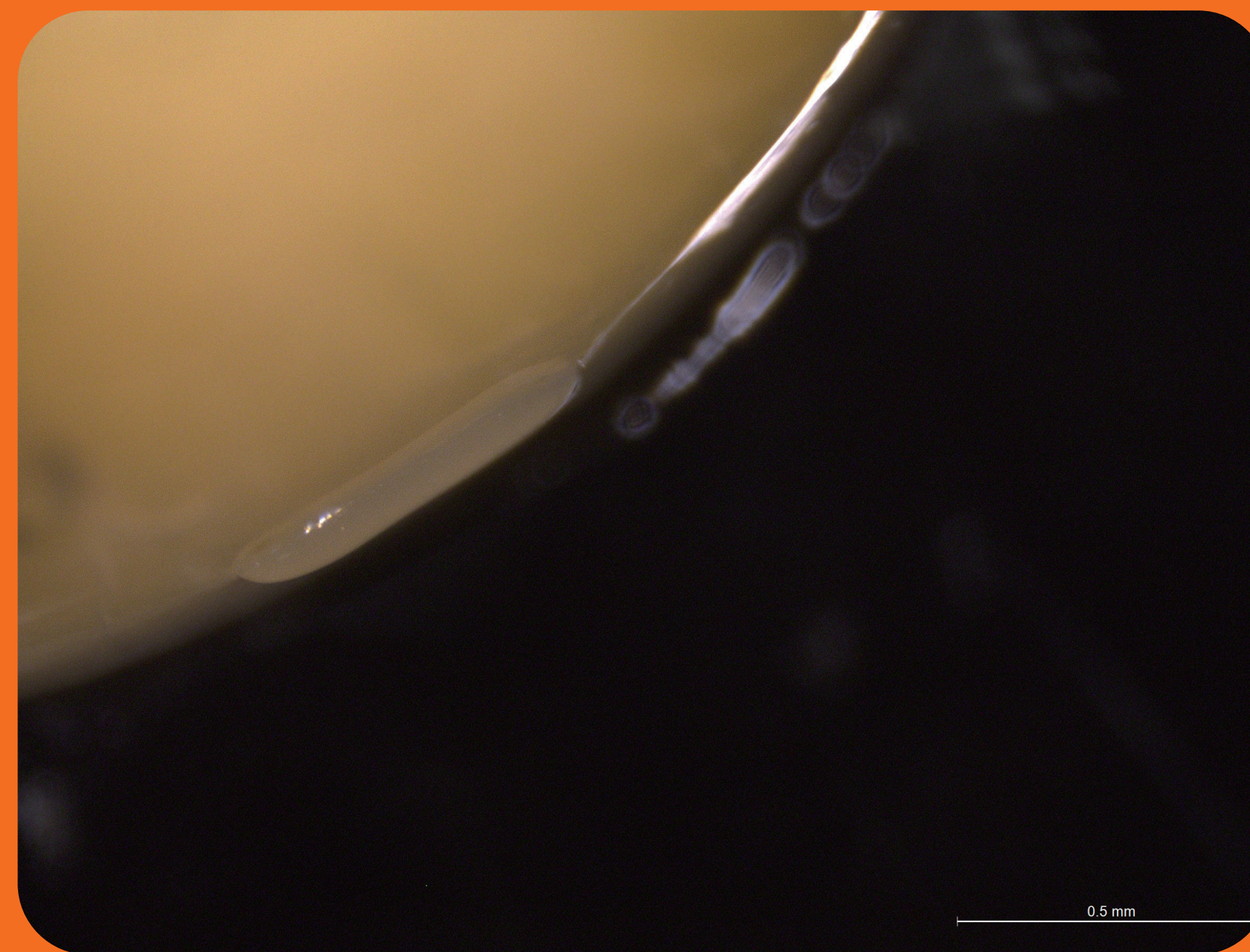


PUPAL PARASITOID WASP - *Dirhinus giffardii*

Order: Hymenoptera Family Chalcididae

- Originally described from West Africa.
- *D. giffardii* is a generalist parasitoid known to attack fruit fly (Tephritidae).
- Female *D. giffardii* pierce the puparial wall and oviposit onto the host pupa. After 18~20 days *D. giffardii* adult emerges from host pupae.

Egg stage : 1-2days



Adult stage : 20 days



Larve stage : 9-10 days



Pupae stage : 7-8 days

